

SPAIN 2024

Presented by: Stacy Gray WL Curriculum
Coordinator & the WL Teachers
May 17, 2023 Informational Meeting



AGENDA

- Introduction
- Study Abroad: Spain
- Requirements
- The 'why'
- Expectations
- What is Included
- Dates, Itinerary, Cost
- Application Process/Deadlines



WHAT IS STUDY ABROAD: SPAIN

It is a course.

**We are committed to providing a
quality mini-study abroad
experience for CBSD students.**

Click [here](#) to go to the CBSD Program of Studies.

[4522 Study Abroad: France \(Summer of 2025\)](#)

[4521 Study Abroad: Spain \(Summer of 2024\)](#)

(.25 elective credit)

Study Abroad courses are designed to provide the student with an immersion experience and the opportunity to use a world language in an authentic culture where the target language is spoken. Participants will experience the art, music, history, and customs of the country as well as participate in tasks that improve and enhance their language ability. Each study abroad course contains five elements; pre-travel sessions (attendance at these sessions is mandatory for students), project, classwork abroad, travel, and reflection. While abroad and leading up to trip, students must adhere to all school board policies, including those regarding drugs, alcohol, and weapons. Students will comply with requirements regarding masking, vaccinations and/or evidence of negative covid tests as required by the host country. Online applications will be available at the informational meeting, the date for this meeting will be provided by World Languages Department teachers. The cost of the course will vary from year to year and is the sole financial responsibility of parents or guardians. Enrollment is limited. Travel for these courses will occur in the summer, rotating between countries/languages if possible. Travel is dependent upon world conditions, travel alerts, student enrollment and chaperone availability. **Prerequisites: Teacher recommendations, essay, application. Students must have completed Spanish 2 (Spain) or French 2 (France) with a grade of C or better prior to departure; they must also be enrolled in the next level of the sequence. Upper classmen get preference due to enrollment limits.**



REQUIRED TRIP COMPONENTS

- PRE-TRAVEL SESSIONS

THESE ARE ***MANDATORY FOR STUDENTS***, PARENTS ARE WELCOME TO JOIN

TRIP LOGISTICS

TRAVEL TIPS/CULTURAL OVERVIEW

CUSTOMS AND ETIQUETTE

CLASSROOM EXPECTATIONS

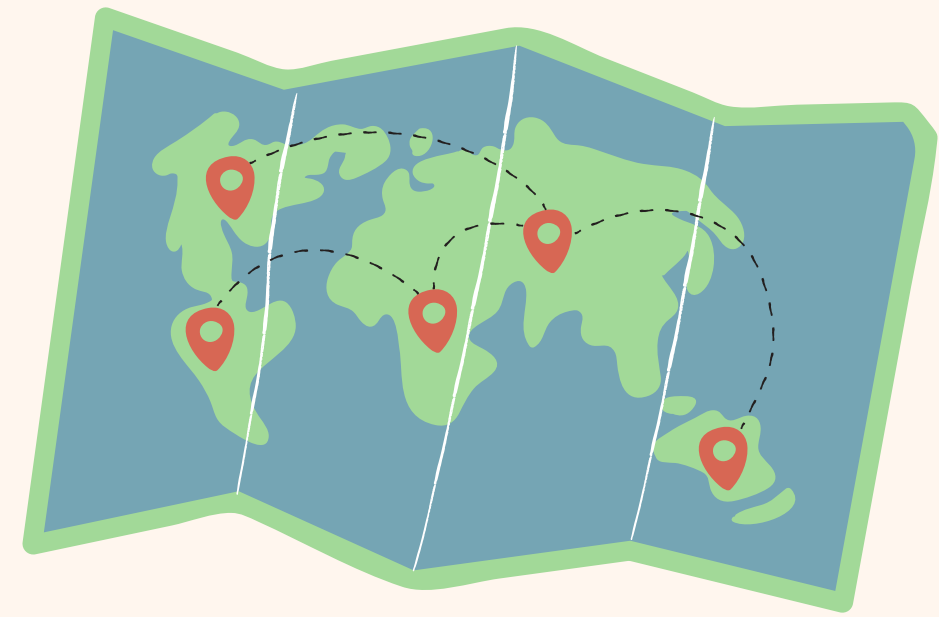
- ATTEND CLASS ABROAD & TRAVEL

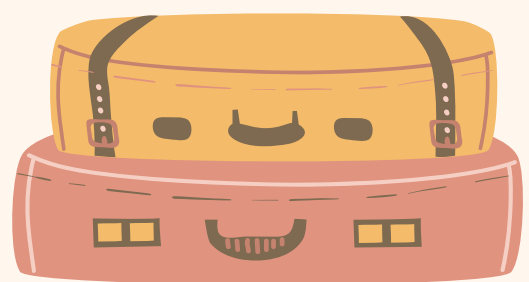
- PROJECT SUBMISSION



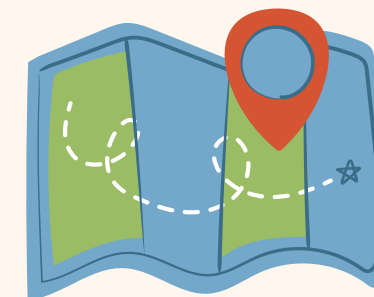
COURSE TIMELINE

- May 17, 2023 – Info Meeting
- October 2023 – Session #1
- January 2024 – Session #2
- April 2024 – Session #3
- June 2024– Session #4
- July 2024 – Study Abroad
- August 2024 – Projects submitted in Canvas and .25 elective credit awarded





WHY TRAVEL?



Leave your comfort zone

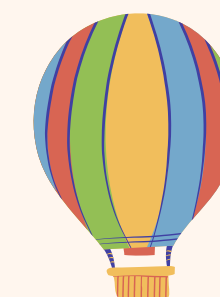
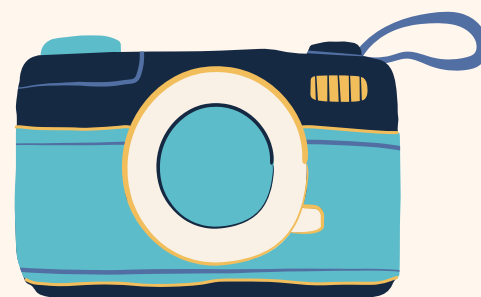
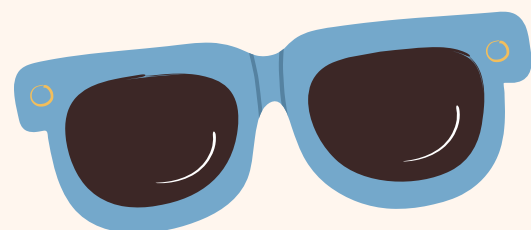
Learn to be independent

Learn new languages

Meet people you otherwise wouldn't

Learn another way of life

Learn more about your own culture





REFLECTIONS OF CB STUDENTS

SAFETY & EXPECTATIONS

- 10 to 1 Student to Chaperone Ratio
- CBSD Policies Enforced
 - Violation of CB or T&E policies result in immediate consequences and student will be sent home at their own expense, and receive an F on their transcript.
 - ZERO tolerance
 - Complete all required elements or F on transcript

SAFETY AND MEDICAL

Travel & Education is firmly committed to the safety and security of each individual who participates in our programs. Below are a list of steps taken by T&E designed to enhance our ability to reduce the risk to students and faculty while abroad.



Safety & Medical

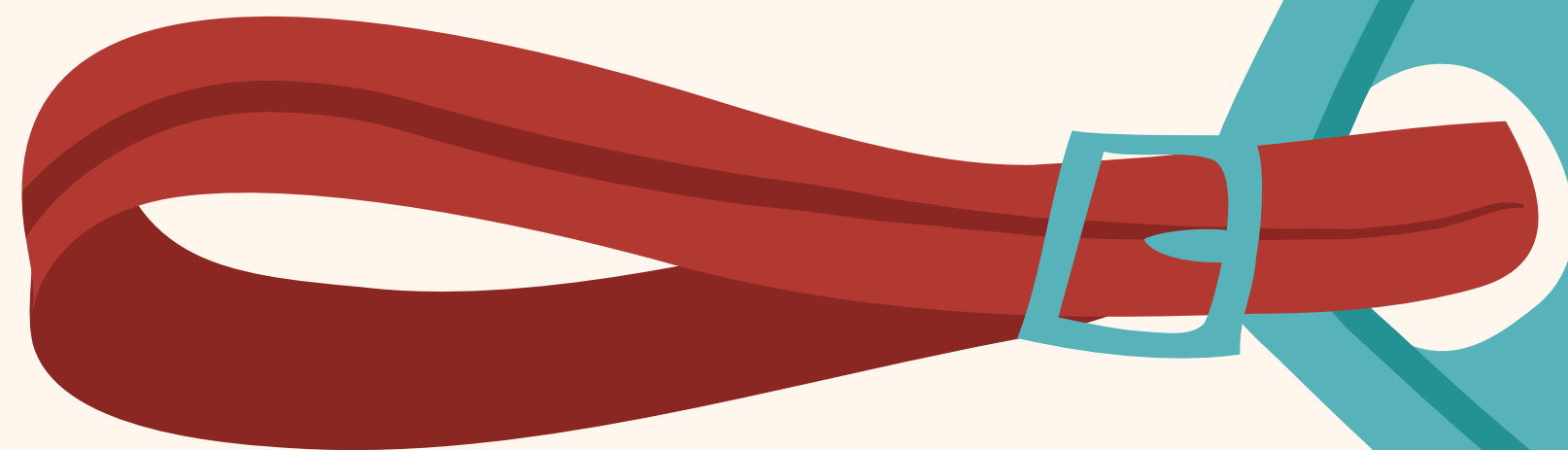
You can access further details on this subject by visiting our Safety & Medical page.

- Travel & Education employs a staff of full-time, English-speaking Coordinators offering **constant two-way communication** through provided Spanish mobile phones prior to departure.
- Travel & Education training procedures include a **strict chain of communication in emergency** situations to ensure immediate and appropriate reactions.
- Travel & Education, in partnership with on-site academic institutions, have a **plan of action in place for situations of national security or natural disasters** ([access our plan here](#)).
- Travel & Education provides a **full orientation** that includes instruction in good practices helping students ensure their own safety and security.
- Travel & Education provides a **local medical insurance included in all of our programs**.
- Travel & Education **offers a comprehensive insurance plan** that covers major medical, trip cancelation / interruption and much more including faculty replacement for faculty-led programs ([access our policy here](#)).

Click [HERE](#) to visit T&E's website

MARK YOUR CALENDARS

SAT. JUNE 29, 2024
THROUGH
MON. JULY 8, 2024
MAY CHANGE WITHIN A DAY OR 2



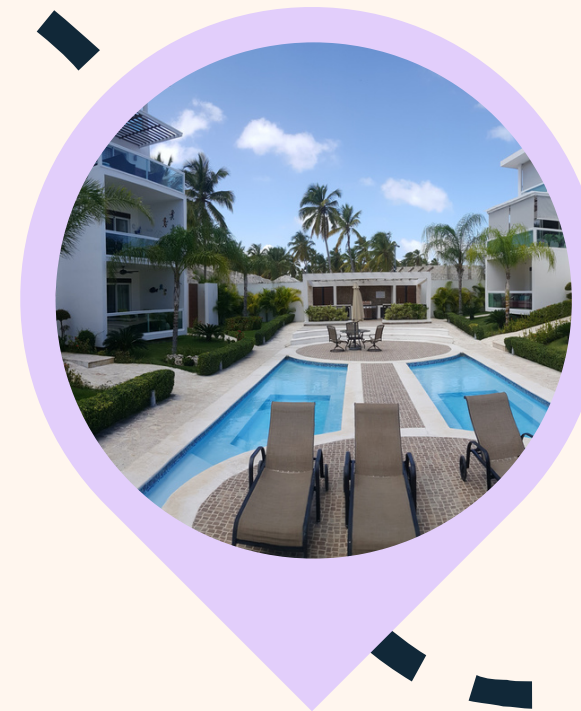
THE ITINERARY



Departure



5 days
Salamanca in
classes



Madrid



Return Home

SALAMANCA







SEGOVIA



TOLEDO



MADRID



FLAMENCO



WHAT IS INCLUDED?

- Round trip flight
- Residence Hall/Dorm/Hotels
- Comfortable buses
- Daily breakfast and dinner
- Full-time T&E Program Coordinator
- Licensed local guides
- Entrance fees
- Comprehensive medical coverage
- Educational itinerary

WHAT ARE YOU RESPONSIBLE FOR?

- SPENDING MONEY
- LUNCH AND SNACKS
- PASSPORT AND/OR VISA FEES
- MONTHLY PAYMENTS TO T&E
- UNDERSTANDING CBSD EXPECTATIONS
- TIPS AND CHARTER BUS

IF YOU DO NOT HAVE A PASSPORT AND ARE ACCEPTED,
YOU NEED TO APPLY FOR ONE ASAP

PRICE OF THE PROGRAM

\$4950 (w/40 MIN PPL)

***IF THERE IS A DROP IN AIRLINE PRICES BEFORE WE
BUY IN JULY 2023 THIS COULD DROP**

HOW DO I APPLY?

1. Talk to your parent/guardian first.
2. Fill out the parent approval form on Microsoft Forms (**use CB email**). If parents are divorced or separated, each parent must fill out their own. If one of the two parents does not approve, student will not participate.
3. Fill out the application form on Microsoft Forms (**use CB email**).
4. You must be enrolled in a Spanish class in the 24-25 school year.
5. Get one recommendation from your Spanish teacher.
6. Get one recommendation from a **NON**-Spanish teacher.

***The teacher recommendations are also completed on Microsoft Forms with a link that you will provide to the teachers.**

Complete the parent approval form, the application, and the teacher recommendations by going to this link.

IMPORTANT DATES

ALL APPLICATIONS DUE BY MIDNIGHT ON FRIDAY 6/2.

I WILL LET YOU KNOW IF YOU ARE ACCEPTED THE WEEK OF 6/5.

IF YOU ARE ACCEPTED, A NON-REFUNDABLE DEPOSIT OF \$200 IS DUE BY 6/9 TO SECURE YOUR SPOT.

